

**MEDICINE
PROBLEMS**

.UZ

ISSN 3030-3133

**TIBBIYOT FANLARINING
DOLZARB MASALALARI**

**TOPICAL ISSUES OF MEDICAL
SCIENCES**



N° 1 (3)

2025



САЙТ: <https://medicineproblems.uz>
ISSN: 3030-3133

MEDICINEPROBLEMS.UZ
TIBBIYOT FANLARINING DOLZARB
MASALALARI
№ 1 (3)-2025

TOPICAL ISSUES OF MEDICAL SCIENCES

TOSHKENT-2025

BOSH MUHARRIR:

ISANOVA SHOIRA TULQINOVNA- Tibbiyot fanlari bo'yicha falsafa doktori (PhD), Samarqand davlat tibbiyot universiteti

TAHRIR HAY'ATI:

TIBBIYOT FANLARI

Safarov Zafar Fayzullayevich –tibbiyot fanlari bo'yicha falsafa doktori (PhD), Toshkent pediatriya tibbiyot instituti;

Xakimov Murod Shavkatovich –tibbiyot fanlari doktori, professor, Toshkent tibbiyot akademiyasi;

Mavlanov Alimbay – tibbiyot fanlari doktori, professor, Toshkent tibbiyot akademiyasi;

Ergashev Nasriddin Shamsiddinovich - tibbiyot fanlari doktori, professor, Toshkent pediatriya instituti;

Abdullayeva Nargiza Nurmatovna - tibbiyot fanlari doktori, professor, Samarqand davlat tibbiyot universiteti;

Djurabekova Aziza Taxirovna - tibbiyot fanlari doktori, professor, Samarqand davlat tibbiyot universiteti;

Xaydarova Dildora Kadirovna - tibbiyot fanlari doktori, professor, Toshkent tibbiyot akademiyasi;

Ruziboyev Sanjar Abdusalomovich- tibbiyot fanlari doktori, dotsent, Samarqand davlat tibbiyot universiteti;

Sattarov Oybek Toxirovich- tibbiyot fanlari doktori, dotsent, Toshkent tibbiyot akademiyasi;

Niyozov Shuxrat Tashmirovich - tibbiyot fanlari doktori, dotsent, Samarqand davlat tibbiyot universiteti;

Tavasharov Bahodir Nazarovich – tibbiyot fanlari nomzodi, Toshkent tibbiyot akademiyasi;

Xalmetova Feruza Iskandarovna – tibbiyot fanlari nomzodi, Toshkent tibbiyot akademiyasi;

G'aybiyev Akmaljon Axmadjonovich - tibbiyot fanlari bo'yicha falsafa doktori (PhD), dotsent, Samarqand davlat tibbiyot universiteti;

Qo'ziyev Otabek Juraqulovich – tibbiyot fanlari nomzodi, dotsent, Toshkent pediatriya tibbiyot instituti;

Ergasheva Munisa Yakubovna - tibbiyot fanlari bo'yicha falsafa doktori (PhD), dotsent, Samarqand davlat tibbiyot universiteti;

Ollanova Shaxnoza Sirlibayevna – tibbiyot fanlari nomzodi, Samarqand davlat tibbiyot universiteti;

Safarov Zafar Fayzullayevich – tibbiyot fanlari nomzodi, Toshkent pediatriya tibbiyot instituti;

Xayitov Ilxom Bahodirovich – tibbiyot fanlari nomzodi, Toshkent tibbiyot akademiyasi;

Alimov Suxrob Usmonovich- tibbiyot fanlari nomzodi, Toshkent tibbiyot akademiyasi;

Fozilov Uktam Abdurazzokovich - tibbiyot fanlari nomzodi, dotsent, Buxoro davlat tibbiyot instituti;

Raximov Oybek Umarovich – tibbiyot fanlari nomzodi, Toshkent pediatriya instituti;

Sattarov Inayat Saparbayevich – tibbiyot fanlari nomzodi, Toshkent tibbiyot akademiyasi;

Abidov O'tkir O'ktamovich – tibbiyot fanlari nomzodi, Buxoro davlat tibbiyot instituti;

Amonova Zaxro Qaxramon qizi - tibbiyot fanlari nomzodi, Samarqand davlat tibbiyot universiteti.

FARMATSEVTIKA FANLARI

Zulfikariyeva Dilnoza Alisherovna - farmatsevtika fanlari doktori (DSc), professor, Toshkent farmatsevtika instituti;

Toshpo'latova Azizaxon Dilshodovna - farmatsevtika fanlari doktori (DSc), professor, Toshkent farmatsevtika instituti;

Xusainova Rayxona Ashrafvona - farmatsevtika fanlari doktori (DSc), dotsent, Toshkent farmatsevtika instituti;

Maksudova Firuza Xurshidovna farmatsevtika fanlari doktori (DSc), dotsent, Toshkent farmatsevtika instituti;

Ziyamuxamedova Munojot Mirgiasovna - farmatsevtika fanlari doktori, Toshkent farmatsevtika instituti, dotsent v.b.;

Rizayeva Nilufar Muxutdinovna – farmatsevtika fanlari nomzodi, dotsent Toshkent farmatsevtika instituti;

TIBBIYOT FANLARINING DOLZARB

MASALALARI elektron jurnali 02.03.2023-yilda 132099-sonli guvohnoma bilan davlat ro'yxatidan o'tkazilgan.

Muassis: "SCIENCEPROBLEMS TEAM" mas'uliyati cheklangan jamiyati.

TAHRIRIYAT MANZILI:

Toshkent shahri, Yakkasaroy tumani, Kichik Beshyog'och ko'chasi, 70/10-uy. Elektron manzil: scienceproblems.uz@gmail.com

Telegram kanal:

https://t.me/Scienceproblemsteam_uz

TIBBIYOT FANLARINING DOLZARB MASALALARI
3-jild, 1- son (Fevral, 2025). – 18 bet.

MUNDARIJA

*Mirzoodilova Nasiba Abdimuni qizi, Umarova Zamira Faxriyevna,
Tursunova Laylo Dilshatovna*

SURUNKALI BUYRAK KASALLIGI: RUHIY HOLATGA, HAYOT SIFATIGA VA YURAK-
QON TOMIR NATIJALARIGA TA'SIRI7-12

Normatov G'ayrat Alijanovich

(POPULUS FREMONTII) TERAGIDAN ISHQORIY SELLYULOZA OLIH VA UNING
XUSUSIYATLARINI O'RGANISH 13-17

C O N T E N T

<i>Mirzoodilova Nasiba Abdimuni qizi, Umarova Zamira Faxriyevna, Tursunova Laylo Dilshatovna</i> CHRONIC KIDNEY DISEASE: IMPACTS ON MENTAL STATE, QUALITY OF LIFE AND CARDIOVASCULAR OUTCOMES	7-12
<i>Normatov Gayrat</i> OBTAINING ALKALINE CELLULOSE FROM POPLAR POPULUS FREMONTII AND STUDYING ITS PROPERTIES	13-17

Received: 1 January 2025
Accepted: 15 January 2025
Published: 5 February 2025

Article / Original Paper

CHRONIC KIDNEY DISEASE: IMPACTS ON MENTAL STATE, QUALITY OF LIFE AND CARDIOVASCULAR OUTCOMES

Mirzoodilova Nasiba Abdimuni qizi, Umarova Zamira Faxriyevna, Tursunova Laylo Dilshatovna

Tashkent Medical Academy, Uzbekistan

Abstract: This review delves into the intricate relationship between chronic kidney disease (CKD), cardiorenal syndrome (CRS), and chronic heart failure (CHF), focusing on their collective impact on patients' mental health and quality of life. CKD is associated with a significantly elevated risk of cardiovascular diseases, with the prevalence being 64% higher in individuals with impaired renal function compared to those with normal kidney function. An inverse correlation has been documented between a glomerular filtration rate (GFR) below 60 ml/min/1.73 m² and an increased risk of mortality, cardiovascular complications, and hospitalizations. The progression of CKD amplifies cardiovascular risks, with stage 2 patients experiencing a 4.8% incidence of complications, nearly doubling by stages 3-4. Dialysis and kidney transplant recipients exhibit a tenfold higher likelihood of adverse cardiovascular events compared to the general population. Beyond physical complications, CKD imposes a substantial psychological toll, manifesting as depression, anxiety, and social withdrawal, which critically diminish quality of life. This review highlights the importance of comprehensive management strategies, including early intervention, cardiovascular risk mitigation, and psychosocial support, to improve outcomes for CKD patients.

Key words: cardiorenal syndrome, medical and social aspects, acute kidney injury (AKI).

SURUNKALI BUYRAK KASALLIGI: RUHIY HOLATGA, HAYOT SIFATIGA VA YURAK-QON TOMIR NATIJALARIGA TA'SIRI

Mirzoodilova Nasiba Abdimuni qizi, Umarova Zamira Faxriyevna, Tursunova Laylo Dilshatovna

Toshkent Tibbiyot Akademiyasi, O'zbekiston

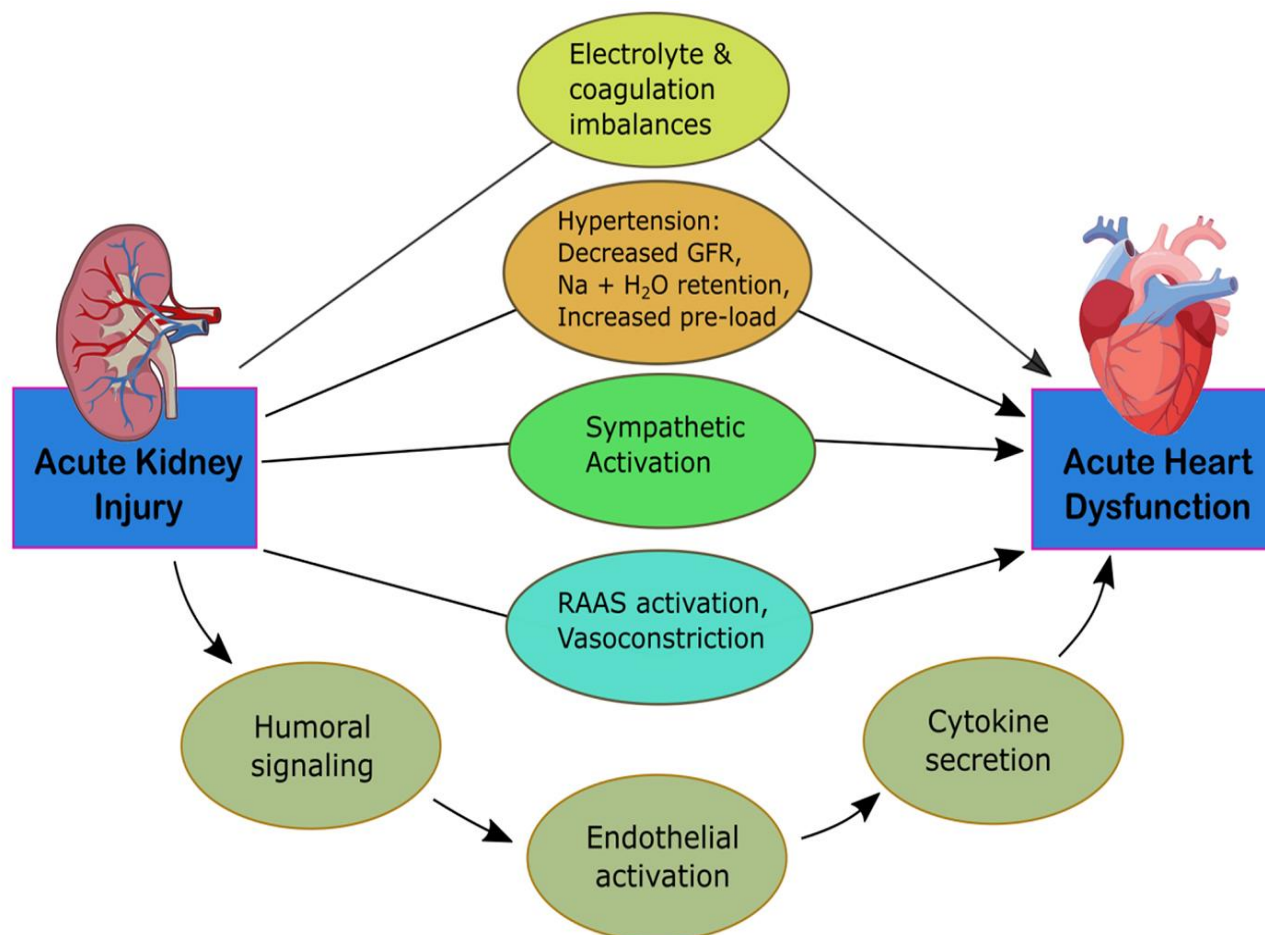
Annotatsiya. Mazkur maqolada surunkali buyrak kasalligi (SBK), kardiorenal sindrom (KRS) va surunkali yurak yetishmovchiligi (SYY) o'rtasidagi murakkab munosabatlar o'rganilib, ularning bemorlarning ruhiy salomatligi va hayot sifatiga bo'lgan umumiy ta'siri tahlil qilingan. SBK yurak-qon tomir kasalliklari xavfining sezilarli darajada oshishi bilan bog'liq bo'lib, buyrak funksiyasi buzilgan odamlarda buyrak funksiyasi normal bo'lganlarga nisbatan bu kasallikning tarqalishi 64% ga yuqori. Koptokcha filtratsiya tezligi (KFT) 60 ml/min/1,73 m² dan past bo'lsa, o'lim, yurak-qon tomir asoratlari va kasalxonaga yotqizish xavfining ortishi o'rtasida teskari bog'liqlik aniqlangan. SBK rivojlanishi yurak-qon tomir xavflarini oshiradi, 2-bosqichdagi bemorlarda 4,8% asoratlarni kuzatiladi, bu esa 3-4 bosqichlarda deyarli ikki baravar oshadi. Dializ yoki buyrak transplantatsiyasini o'tkazgan bemorlarda yurak-qon tomir kasalliklari xavfi umumiy aholiga nisbatan 10 baravar yuqori. Jismoniy asoratlardan tashqari, SBK sezilarli psixologik bosim ko'rsatadi, bu esa depressiya, tashvish va ijtimoiy cheklanish shaklida namoyon bo'lib, hayot sifatini sezilarli darajada pasaytiradi. Ushbu maqolada SBK bilan og'rigan bemorlarni davolash natijalarini yaxshilash uchun erta aralashuv, yurak-qon tomir xavflarini kamaytirish va psixologik yordamni o'z ichiga olgan kompleks davolash yondashuvining muhimligi ta'kidlangan.

Kalit so'zlar: kardiorenal sindrom, tibbiy va ijtimoiy jihatlar, o'tkir buyrak yetishmovchiligi (OBY).

DOI: <https://doi.org/10.47390/3030-3133V3I1Y2025N01>

Currently, CRS is a pathological interdependent condition involving the heart and kidneys, developing as a result of acute or chronic dysfunction of one of the organs with

subsequent acute or chronic dysfunction of the other. The center of pathogenesis of cardiorenal syndrome is the activation of the renin-angiotensin-aldosterone system (RAAS) and sympathetic hyperactivation. It has long been known that the kidneys control the volume of extracellular fluid by regulating the processes of excretion and reabsorption of sodium, and the heart controls systemic hemodynamics. As studies have shown, when the heart and/or kidneys are damaged, chronic activation of the sympathetic nervous system and RAAS occurs, endothelial dysfunction and systemic inflammation develop, and a vicious circle is formed in which the combination of cardiac and renal dysfunction leads to an accelerated decrease in the functional capacity of each organ, myocardial remodeling, damage to the vascular wall and renal tissue ultimately lead to increased morbidity and mortality. In particular, a quarter drop in cardiac output leads to a two-fold decrease in renal perfusion. It should be emphasized that initially the glomerular filtration rate is relatively stable due to an increase in the filtration fraction through autoregulation and afferent vasoconstriction induced by angiotensin II. Therefore, a decrease in glomerular filtration rate is associated with a worse overall prognosis in patients with both cardiovascular diseases and renal dysfunction¹. On the other hand, damage to the heart and kidneys is accompanied by hyperproduction of cytokines, increased migration of monocytes and neutrophils, which caused the progression of endothelial dysfunction and induced remote organ dysfunction.



¹ Шутов АМ, Серов ВА. Кардиоренальный континуум или кардиоренальный синдром? // Клиническая нефрология.2010;1:44-48.

In 2008, at the ADQI consensus conference in Venice, C. Ronco et al. proposed a definition and classification of acute kidney injury, in which they identified five types.

Type 1 - acute CRS. Acute cardiac dysfunction (cardiogenic shock, acute decompensation of chronic heart failure – CHF) significantly reduces cardiac output and increases venous pressure. Perfusion of the kidneys and their filtration capacity decrease, which leads to acute kidney injury (AKI) and subsequently to the development of chronic kidney disease (CKD).

Type 2 - chronic CRS. Characterized by the presence of chronic cardiac pathology, primarily CHF, leading to the development or progression of CKD. Renal dysfunction in patients with CHF is detected in 45.0-63.6% of cases. Systolic and diastolic dysfunction of the left ventricle (LV) leads to prolonged renal hypoperfusion against the background of micro- and macroangiopathies, severe neurohormonal disorders: increased production of vasoconstrictors (adrenaline, angiotensin II, endothelin), changes in the sensitivity and release of endogenous vasodilators (natriuretic peptides, nitric oxide). A combination of cardiovascular risk factors (arterial hypertension, dyslipidemia, hyperuricemia) increases the likelihood of developing CKD. The development of hypertensive nephrosclerosis in arterial hypertension (AH) is a common cause of CKD and is significantly accelerated by hyperuricemia, hyperglycemia and dyslipidemia. Moderate decrease in SCF in essential AH leads to a doubling of the risk of death. At different time periods of the disease, transformation of acute and chronic CRS (types 1 and 2) is possible.

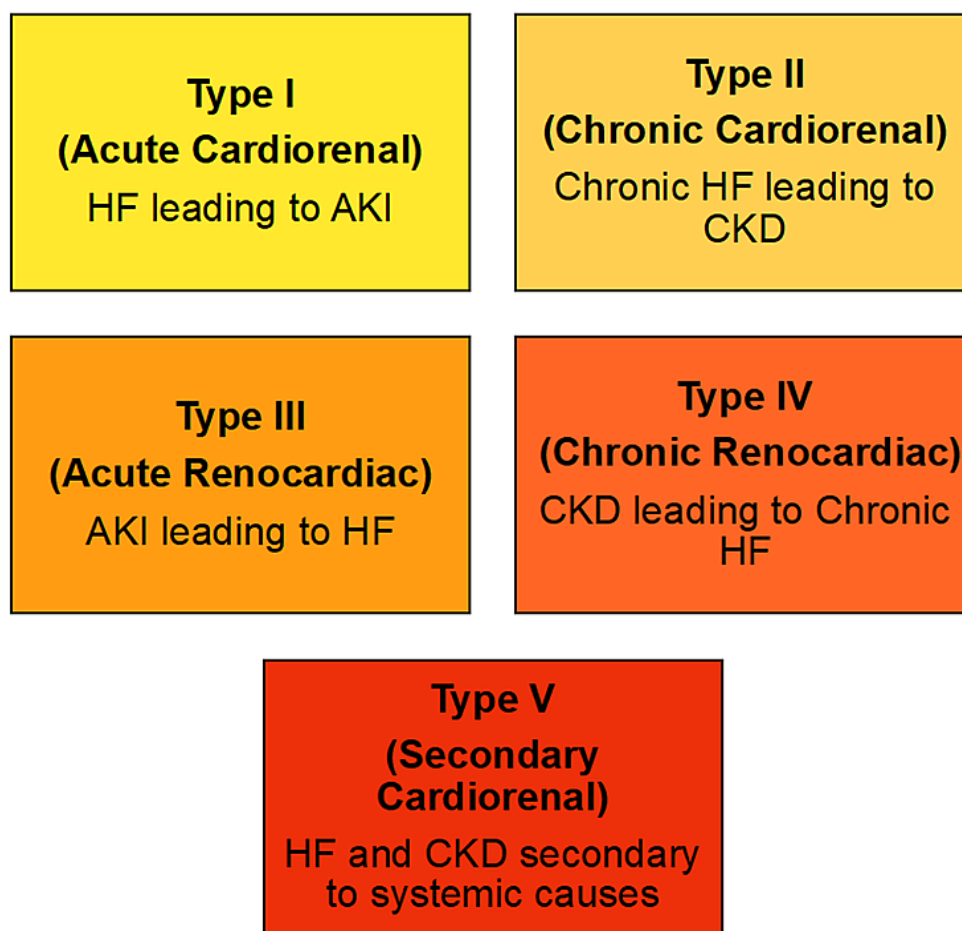
Type 3 CRS - acute renocardial syndrome. Characterized by a primary, sudden deterioration in renal function (for example, in acute glomerulonephritis or pyelonephritis, acute tubular necrosis, acute urinary tract obstruction), which leads to acute cardiac dysfunction (ACH, arrhythmia, ischemia). AKI (acute kidney injury) is frequently observed in hospitalized patients and in patients in the intensive care unit, in 9 and 35% of cases, respectively. The prevalence of AKI in coronary angiography (contrast-induced nephropathy) and cardiac surgery ranges from 0.3 to 29.7% and is associated with high mortality. Acidosis developing in renal failure, contributing to the development of pulmonary vasoconstriction and right ventricular failure, has a negative inotropic effect and, in addition to electrolyte disorders, increases the risk of arrhythmia. In addition, renal ischemia itself can provoke inflammation and apoptosis of cardiomyocytes.

A special form of this type of CRS is renal artery stenosis. Blockade of the renin-angiotensin-aldosterone system (RAAS) is a necessary component of therapy for such patients, however, in case of bilateral renal artery stenosis or stenosis of the artery of a single kidney the use of these drugs can lead to decompensation of renal failure. In severe AKI requiring renal replacement therapy (RRT), hypotension, rhythm and conduction disturbances, myocardial ischemia due to rapid fluid and electrolyte shifts during dialysis may develop.

Type 4 CRS - chronic renocardial syndrome. This is a situation where primary CKD leads to impaired cardiac function (ventricular hypertrophy, diastolic dysfunction or increased risk of adverse cardiovascular events). The main cause of kidney damage is diabetes mellitus (DM) type 2 and hypertension, a significant role is played by atherosclerosis, CHF and obesity. In patients with pre-dialysis CKD, the prevalence of cardiac pathology, overall and cardiac mortality correlate with the severity of renal dysfunction. The prevalence of cardiovascular disease in the population of patients with reduced renal function is 64% higher than in those

with preserved function. An independent inverse relationship was found between SCF <60 ml/min/1.73 m² and an increased risk of death, cardiovascular complications, and hospitalization. The incidence of new cardiovascular complications is 4.8% in patients with stage 2 CKD and almost doubles in stages 3-4. The risk of developing adverse cardiovascular outcomes in patients on dialysis or in kidney transplant recipients is tens of times higher than in the general population .

Type 5 KRS - secondary CRS. Characterized by the presence of combined renal and cardiac pathology due to acute or chronic systemic diseases, while the dysfunction of one organ affects the functional state of another, and vice versa. Such diseases include sepsis, diabetes, amyloidosis, systemic lupus erythematosus, and sarcoidosis. Data on the prevalence of type 5 CRS are scarce due to the large number of acute and chronic predisposing conditions.



A persistent decrease in hemoglobin concentration below 120 g/l in women and below 130 g/l in men indicates anemic syndrome in chronic kidney disease. Accumulated clinical experience shows that anemia in chronic kidney disease develops long before the appearance of signs of uremia and serves as a cause of the progression of renal and cardiovascular complications. In conditions of anemia, the production of angiotensin II increases many times, which is accompanied by the development of fibrotic changes both in the heart and in the kidneys. Whereas, correction of renal anemia using erythropoietin preparations reliably slows the progression of chronic renal failure and significantly reduces the risk of cardiovascular diseases.

It was shown that in patients with chronic heart failure, hyperkalemia was detected in 11.2% of cases, and hypokalemia in 28.0% of cases. In the pre-dialysis stage of chronic kidney disease, persistent hyperkalemia serves as a predictor of a decrease in the glomerular filtration rate. Therefore, starting from the pre-dialysis stage of chronic kidney disease, it is necessary to ensure regular monitoring of blood potassium, especially in individuals taking drugs that block the activity of the RAAS.

In the study by I. T. Murkamilov and co-authors, bilateral cardiorenal relationships in nephrotic syndrome were analyzed taking into account gender characteristics¹. It was shown that the average indicators of systolic, diastolic, pulse and mean arterial pressure are significantly higher in male patients with nephrotic syndrome. At the same time, they more often had supraventricular and ventricular ectopic activity. As the researchers emphasize, in the subgroup of women with nephrotic syndrome, sinus tachycardia, slowing of impulse conduction along the bundle branches of His, and impaired repolarization processes of the left ventricle were detected much more often.

In another study, which examined gender-specific characteristics of cardiorenal relationships and cytokine status in patients with chronic kidney disease, it was found that the diameter of the aortic outflow tract, the thickness of the intima-media complex of the carotid arteries, the size of the left atrium, the end-diastolic size of the left ventricle, the thickness of the interventricular septum and the mass of the myocardium of the left ventricle were significantly higher, while the ejection fraction of the left ventricle, on the contrary, was significantly lower in men compared to women².

Conclusion. Similarities in common risk factors, mechanisms of development and mutual aggravation of cardiovascular diseases and renal dysfunction substantiate the position of cardiorenal syndrome, which requires interdisciplinary care from both cardiologists and nephrologists, as well as health care organizers, in order to ensure a high level of medical (specialized) care with the maximum favorable outcome of therapy and a minimum of side effects associated with treatment

References/Литература/Adabiyotlar:

1. Шутов АМ, Серов ВА. Кардиоренальный континуум или кардиоренальный синдром? // Клиническая нефрология.2010;1:44-48.
2. Миркамиллов ИТ, Сабиров ИС, Фомин ВВ, и др. Двусторонние кардиоренальные взаимоотношения в организме пациентов при нефротическом синдроме // Клиническая лабораторная диагностика.2019;64:4:196-203.
3. Смирнов АВ. Системный подход к анализу кардиоренальных взаимоотношений как первый шаг на пути к нефрологии формата п4 // Нефрология. 2011;15(2):11-19. doi:10.24884/1561-6274-2011-15-2-11-19
4. Смирнов АВ, Добронравов ВА, Каюков ИГ. Кардио-ренальный континуум: патогенетические основы превентивной нефрологии // Нефрология. 2005;9(3):7-15. doi:10.24884/1561-6274-2005-9-3-7-15
5. Шутов АМ, Серов ВА. Кардиоренальный континуум или кардиоренальный синдром? // Клиническая нефрология.2010;1:44-48.

¹ Миркамиллов ИТ, Сабиров ИС, Фомин ВВ, и др. Двусторонние кардиоренальные взаимоотношения в организме пациентов при нефротическом синдроме // Клиническая лабораторная диагностика.2019;64:4:196-203.

²Смирнов АВ, Добронравов ВА, Каюков ИГ. Кардио-ренальный континуум: патогенетические основы превентивной нефрологии // Нефрология. 2005;9(3):7-15. doi:10.24884/1561-6274-2005-9-3-7-15

6. Щекочихин ДЮ, Козловская НЛ, Копылов ФЮ, и др. Гипонатриемия как фактор риска кардиоренального синдрома при хронической сердечной недостаточности // Клиническая нефрология.2013;5:4-7.
7. Jabbarov O. O. et al. Disorders Function of the Heart and Kidney in Diabetes Mellitus. – 2023.
8. Tursunova L. D., Jabbarov O. O. Cardiorenal Syndrome in Patients with Chronic Kidney Disease and Diabetes Mellitus. – 2023.
9. Турсунова Л., Жаббаров О. Применения сакубитрил //валсартана у больных с сердечной недостаточностью с низкой фракцией выброса. – 2023.

Received: 1 January 2025
Accepted: 15 January 2025
Published: 5 February 2025

Article / Original Paper

OBTAINING ALKALINE CELLULOSE FROM POPLAR POPULUS FREMONTII AND STUDYING ITS PROPERTIES

Normatov Gayrat

Associate Professor PhD

Institute of Impuls Medicine Namangan region,
Republic of Uzbekistan, Namangan city

Abstract: In this research paper, we studied the characteristics of the California tree: roots, growth rate, reproduction, fruits, weight, strength, stability, and quality indicators. The California tree was first crushed to a thickness of 0.25-0.5 cm, then treated in 3.5-5% NaOH alkali at a temperature of 150-170 C for 3-5 hours. The cellulose yield, humidity, lignin content, ash content, viscosity, and degree of polymerization of α -cellulose and recycled cellulose were determined. The study should also highlight fundamental studies of the qualitative parameters of cellulose obtained under optimal conditions, as well as the mechanical and physico-chemical parameters of this material. Scientific data on the production possibilities of various paper products, such as high-quality cellulose esters and esters, for chemical processing from California wood will be analyzed.

Key words: properties of Populus fremontii wood, microscopic structure, wood fiber cells, cellulose, quality indicators.

(POPULUS FREMONTII) TERAGIDAN ISHQORIY SELLYULOZA OLISH VA UNING XUSUSIYATLARINI O'RGANISH

Normatov G'ayrat Alijanovich

dotsenti v.v/b, PhD

Impuls Tibbiyot Instituti Namangan viloyati,
O'zbekiston Respublikasi, Namangan shahar
E-mail: normatov_gayrat@mail.ru

Annotatsiya. Ushbu tadqiqot ishimizda Kaliforniya daraxtining xususiyatlarini o'rganib chiqdik: ildizlari, o'sish tezligi, ko'payishi, mevalari, vazni, kuchi, barqarorligi va sifat ko'rsatkichlari. Kaliforniya daraxti dastlab 0,25-0,5 sm qalinlikda maydalangan, keyin 3,5-5% NaOH ishqorida 150-170 O S haroratda 3-5 soat davomida ishlov berilgan. selluloza mahsuldorligi, namligi, lignin miqdori, kul miqdori, yopishqoqligi, a-tsellyuloza va qayta ishlangan sellulozaning polimerizatsiya darajalari aniqlandi.

Tadqiqot shuningdek, optimal sharoitlarda olingan selluloza sifat ko'rsatkichlari, ushbu materialning mexanik va fizik-kimyoviy ko'rsatkichlari bo'yicha fundamental tadqiqotlarni qayd etishi kerak. Kaliforniya daraxtidan kimyoviy qayta ishlash uchun yuqori sifatli selluloza efirlari va efirlar kabi turli xil qog'oz mahsulotlari ishlab chiqarish imkoniyatlari haqidagi ilmiy ma'lumotlar tahlil qilinadi.

Kalit so'zlar: Populus fremontii yog'ochining xossalari, mikroskopik tuzilishi, yog'och tolasi hujayralari, selluloza, sifat ko'rsatkichlari.

DOI: <https://doi.org/10.47390/3030-3133V3I1Y2025N02>

KIRISH

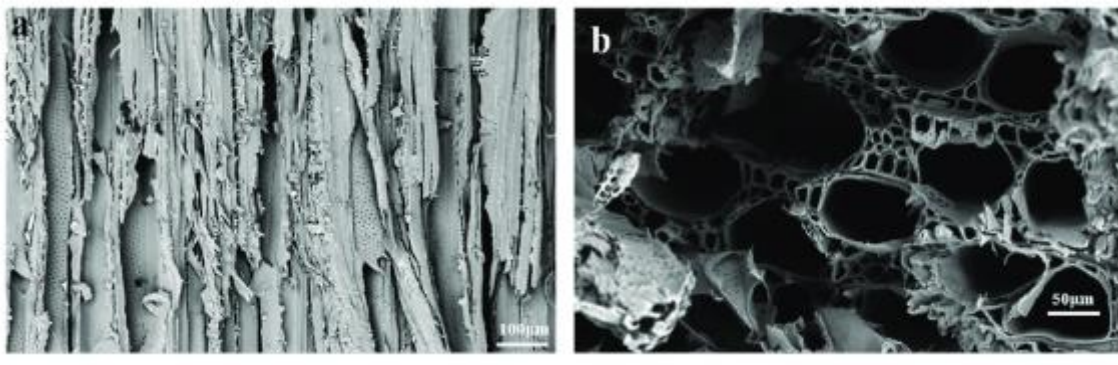
1818-yilda A.Brakonno tomonidan selluloza kashf etilgandan so'ng, oq buk yog'ochidan olish usullarini ishlab chiqish boshlandi[1]. Sellyuloza tushunchasi asta-sekin shakllandi. A.Payen 1838-yilda Sellyuloza tarkibida (C₆H₁₀O₅) va [1,2] bo'lgan o'simlik

hujayralari devorlarida mavjud bo'lgan barcha moddalarni nazarda tutgan. Biroq, 1857-yilda F.Shulze glyukoza bilan bir qatorda bunday tarkibdagi ko'plab moddalarning gidrolizlanishi paytida D-manoza va boshqalar hosil bo'lishini ko'rsatgandan so'ng, sellyuloza gidroliz paytida faqat D-glyukoza beradigan va suyultirilgan kislotalarning ta'siriga yuqori qarshilikka ega bo'lgan yuqori molekulyar birikmaga kiritila boshlandi. 1930-yillarning oxirigacha "tola" atamasi sellyuloza va uning uglevod yo'ldoshlari — gemitsellyuloza aralashmasi sifatida tushuniladi [1]. Ba'zi zamonaviy nashrlarda teskari talqin berilgan, ya'ni "sellyuloza" atamasi texnik sellyulozalarni, "tola" atamasi esa, individual kimyoviy moddalarni anglatadi [2]. Klassik terminologiyada bu ikki atama sinonim hisoblanadi [3]. Yog'ochni tutun nitrat kislotasi bilan delignifikatsiya qilish birinchi marta 1846-yilda G.Mülde-rom tomonidan sellyuloza miqdorini aniqlash maqsadida taklif qilingan[4]. Muqobil manbalarini yaratishda yog'och bo'lmagan xomashyosidan sellyuloza olishning optimal texnologiya sxemalarini ishlab chiqish, uning fizik-kimyoviy xossalarini o'rganish va qayta ishlanib, qimmatbaho mahsulot olish imkoniyatlarini o'rganish dolzarb vazifalardandir. Tabiiy moddalarni qayta ishlashga asoslangan ko'plab sanoat tarmoqlari kimyogar muhandisligi rivojlanishi bilan yangi imkoniyatlarga ega bo'ldi. Xom ashyo etkazib beruvchi yoki texnologik jarayonlarni amalga oshiruvchi organizmlarning genomini o'zgartirish orqali ulardagi biokimyoviy reaksiyalarni tezlashtirish, boshqalarni sekinlashtirish, foydali moddalarni sintez qilish yoki kiruvchi moddalarning shakllanishiga to'sqinlik qilish mumkin. Genlarni olib tashlash yoki qo'shish, ularning tezroq yoki sekin ishlashini ta'minlash orqali genetik muhandislar genetik manipulyatsiya obyektlarining fiziologik jarayonlarini, tuzilishini, tashqi xususiyatlarini va texnologik xususiyatlarini tartibga soladi. Shu yo'l bilan yoqilg'i, vaksinalar, dori-darmon va kimyoviy moddalar allaqachon olinmoqda. Bir necha yil oldin bir guruh yevropalik biotexnologlar lignin tarkibi va tarkibi o'zgargan genetik jihatdan o'zgartirilgan teraklarni sinovdan o'tkazdilar. Sellyuloza va qog'oz ishlab chiqarish uchun xom-ashyo bo'ladi. Ikkinchisi o'simliklarning biokimyosi va genetik muhandisligi bilan qiziqib qolgani ajablanarli emas. Qog'ozning asosiy tarkibiy qismi bo'lgan sellyuloza tolalari, asosan, yog'ochdan, ya'ni bargli va ignabargli daraxtlarning tanasi va shoxlaridan olinadi. Yog'och ikki to'qimadan iborat: suv va mineral moddalarni ildizdan barglarga o'tkazuvchi va tanasiga mustahkamlik beruvchi tayanchdir. Ularning hujayra devorlari nafaqat sellyulozadan, balki gemitsellyuloza va lignindan ham iborat. Ular birgalikda kompozit materialni, uzoq va kuchli sellyuloza molekulalarini ramkaga yig'adigan murakkab uch o'lchovli kompleksni hosil qiladi, ular orasidagi bo'shliqlarni gemitsellyulozalar to'ldiradi va hidrofobik lignin hujayra devorlarini mustahkamlaydi va ularni suv va sharbatlarni o'tkazmaydigan qiladi. Ignabargli daraxtlarda 23-38% lignin, bargli daraxtlarda 14-25% bo'ladi. Aynan shu narsa yog'ochga chiroyli sarg'ish, jigarrang yoki qizg'ish rang beradi va u bilan qoplangan hujayralar yog'och buyumlar yuzasida chiroyli naqsh hosil qiladi. Hujayra devorlarida lignin mavjudligini rangli reaksiyalar, masalan, floriglyuksinol, pirokatexol, natriy xlor va sulfat, anilin gidroksid yoki sulfat bilan osongina ko'rsatish mumkin.

METODOLOGIK QISM

Maqsad sellyulozani ajratib olish va uning tozaligini oshirish. Materiallar: terak yog'ochi (mayda bo'laklarga bo'lingan). Suv natriy gidroksidi (NaOH), sulfat kislotasi (H₂SO₄), filtr qog'ozi, suv hammomi, aralashtirgich, filtrlash apparati, elektr qizdirgich. Terak yog'ochini tayyorlash: terak yog'ochini mayda bo'laklarga bo'ling va suv bilan yaxshilab yuvib tozalanadi. Ishqoriy gidroliz: terak yog'ochini natriy gidroksidi eritmasiga solib, 100-130°C da 2-5 soat

davomida qaynatib, ligninni ajratib oling. Yuvish: Qaynatilgan yog'ichni suv bilan yaxshilab yuvib, qolgan ishqorni olib tashlang. Oqartirish: yuvilgan yog'ichni oqartuvchi vositalar bilan solib, 2-3 soat davomida qaynatib, oqliq darajasi oshiriladi. Yuvish: oqartirilgan yog'ichni yana suv bilan yaxshilab yuvib, qolgan xlorli ohakni olib tashlang. Kislotali gidroliz: yuvilgan yog'ichni sulfat kislotasi eritmasiga solib, 80°C da 1-2 soat davomida qaynatib, sellyulozani ajratib oling. Yuvish: kislotali gidrolizdan keyin sellyulozani suv bilan yaxshilab yuvib, qolgan kislotani olib tashlang. Quriting: yuvilgan va netral pH keltirilgan sellyulozani 60-85°C da quritish pechida quritib oling.



1-rasm (Populus fremontii) Kaliforniya teragini yog'ochining mikroskopik tuzilishi

(a) mikroskopik miqyosda ko'rilgan terak yuzasi. b) Terak mikroskopik tasvirlarining kesmalari.

EKSPERIMENT VA TAJRIBA QISM

Kaliforniya teragini (Populus fremontii) respublikamizda ko'paytirish davom etmoqda, bu qurilish materiali sifatida ishlatiladigan tez o'sadigan daraxtdir. Kaliforniya teragining kimyoviy qayta ishlashga yaroqliligini aniqlash uchun alohida qismlar (tana qismi, qobiq va qismlari) o'rganildi.

Kaliforniya teragi tarkibiy qismlarini tahlil qilish natijalari (1-jadval) shuni ko'rsatadiki, yog'ochning eng qimmatli komponenti — sellyuloza daraxt tanasida eng ko'p miqdorda mavjud va 42,7 foizni tashkil qiladi. Eng kam miqdorda esa, sellyuloza qobig'i (23,8%).

KALIFORNIYA TARKIBIY QISMLARIDA TARKIBI MIQDORI

1-jadval

	Komponentlar	Tana	Shoxlar	Ildizlar	Qobiq
1	Sellyuloza, %	42.7	35.3	38.2	23.8
2	Lignin, %	20.6	18.7	18.0	17.3
3	Kul tarkibi,%	1.78	1.61	1.86	5.8
4	Namlik,%	19.3	18.5	18.2	18.7
5	Ekstraksiya qilinadigan moddalar,%	4.31	6.2	5.6	5.7

1-jadvaldan ko'rinib turibdiki, paulovniyaning shoxlari va ildizlari kimyoviy qayta ishlash uchun ikkilamchi xom ashyo sifatida ishlatilishi mumkin, chunki ular mos ravishda 37,2 va 39,1% gacha, bu tanadan atigi 6-8% kamroq selluloza mavjud bo'ladi. Kaliforniyaning ikkinchi kimyoviy komponenti bo'lgan lignin selluloza tarkibining kamayishi bilan ortadi. Poyasi, shoxlari, ildizi va po'stlog'ida mos ravishda 21,8, 18,7, 19,2 va 17,1% lignin topilgan. Tolali yarim mahsulotlarni olish uchun eng kam miqdorda lignin bilan kaliforniya qobig'idan foydalanish maqsadga muvofiqdir. Qolgan komponentlar selluloza olish uchun kimyoviy ishlov berish uchun qimmatli ikkilamchi resurslardir.

Kaliforniya yog'ochidan selluloza avval gidroliz, keyin esa gidroksidi bilan ishlov berish yo'li bilan olinadi. Kimyoviy ishlov berish samarali bo'lishi uchun paulovniya tolasi kesiladi va 0,5-1 sm o'lchamda maydalanadi. Keyin 100 g olinadi, stakanga solinadi va ichiga 500 ml suv quyiladi. Aralash 4 soat qaynatiladi, ekstraksiya qilinadi va pulpani ajratish uchun filtrlanadi. Massa suyuqlikdan ajratilgandan so'ng 3 foizli nitrat kislova eritmasida 60 daqiqa davomida gidrolizlanadi, so'ngra pH 6,5...8,5 gacha yuviladi va 5 foizli natriy ishqor bilan qaynatiladi va pulpa lignin, polisaxaridlar va boshqalardan ajratiladi. yog'li moddalar. Olingan selluloza pH 9...9,5 gacha yuvilgach, vodorod peroksid eritmasi bilan oqartiriladi. Keyin massa yuviladi va oqartirilgan selluloza quritish shkafida quritiladi. Kaliforniya tolasidan selluloza ajratib olishning optimal sharoitlarini aniqlash uchun uni 5 foizli ishqorda turli vaqtlarda pishirdilar (2-jadval).

KALIFORNIYA TERAGI PISHIRISH VAQTINING SELLYULOZA TARKIBIGA TA'SIRI

2-jadval.

Vaqt, minut	selluloza, %	lignin, %	Polisaxaridlar, %	Kul tarkibi, %	Suvda eruvchan moddalar, %
90	16.2	13.6	18.1	1.92	6.9
180	17.9	14.8	28.9	1.85	7.6
210	19.5	18.6	35.4	1.71	8.3
270	39.5	20.8	37.1	1.62	9.1
300	42.4	22.1	36.2	1.55	9.8
360	44.1	21.5	35.5	1.51	10.6
420	45.5	20.8	34.1	1.43	10.1
450	38.2	23.6	37.1	1.32	9.7

2-jadvalda keltirilgan tajribalar natijalariga ko'ra, pavloniya xamirini pishirish uchun optimal sharoitlar quyidagilar:

1. Suvda ekstraksiya — 50 daqiqa davomida qaynatiladi.
2. Selluloza tarkibidagi aralashmalarni tozalash uchun 5.5-6 foizli ishqorda 120-130 ° C da 5 soat qaynatiladi.

Tajribada 2-jadvalga muvofiq selluloza mahsuldorligi 38,2%, lignin miqdori 23,6%, polisaxaridlar miqdori 37,1%, kul miqdori 1,32 %, suvda eruvchan moddalar esa 9,7 foizni tashkil qiladi.

XULOSA

Populus fremontii, ya'ni kaliforniya teragi turli xil qism qayta ishlash jarayonida tajribalar o'tkazilib, xom-ashyoning sifat ko'rsatkichlarini aniqlashda selluloza va uning

hosilalari, shuningdek, qog'oz mahsulotlari yuqori sifatli mahsulot bilan ishlab chiqarish mumkinligi aniqlandi. Kaliforniya daraxtining mikroskopik tuzilishi o'rganildi. Kaliforniya daraxtidan selluloza olish, uning optimal sharoitlari chuqur o'rganildi. Asosiy sifat ko'rsatkichlari daraxtlarining sellulozasidan aniqlandi. *Populus fremontii* kaliforniya daraxtidan olingan sellulozadan oddiy va murakkab efirlarni olish uchun kimyo sanoati va turli qog'oz mahsulotlari ishlab chiqarish sanoatida tavsiya etiladi.

Adabiyotlar/Literatura/Referenses:

1. Толленс-Эльснер Б. Краткий справочник по химии углеводов: справочное издание / под ред. П.П. Шорыгина. Л.; М.: ГОНТИ, Главная редакция химической литературы, 1938. 685 с.
2. Пен Р.З. Технология целлюлозы. В 2-х т. Красноярск: Изд-во СИБГТУ, 2006. Т. 1, 343 с.; Т. 2, 349 с.
3. Кононов Г.Н. Дендрохимия. Химия, нанохимия и биогеохимия компонентов клеток тканей и органов древесных растений. В 2-х т. М.: МГУЛ, 2015. Т. 1. 480 с.
4. Гесс К. Химия целлюлозы и ее спутников / под ред. П. Шорыгина. Л.: Госхимтехиздат, 1934. 620 с.



SAYT: <https://medicineproblems.uz>
ISSN: 3030-3133

MEDICINEPROBLEMS.UZ- TIBBIYOT FANLARINING DOLZARB MASALALARI

№ 1 (3)-2025

TOPICAL ISSUES OF MEDICAL SCIENCES

**TIBBIYOT FANLARINING DOLZARB
MASALALARI** elektron jurnali
02.03.2023 yilda 132099-sonli guvohnoma
bilan davlat ro'yxatidan o'tkazilgan.
Muassis: "SCIENCEPROBLEMS TEAM"
mas'uliyati cheklangan jamiyati.

ТАҲРИРИЯТ МАНЗИЛИ:
Toshkent shahri, Yakkasaroy tumani,
Kichik Beshyog'och ko'chasi, 70/10-uy.
Elektron manzil:
scienceproblems.uz@gmail.com
Telegram kanal:
https://t.me/Scienceproblemsteam_uz